



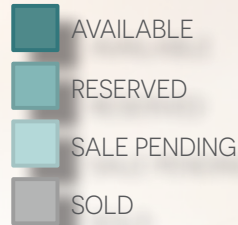
Welcome to The TOWNHOMES on MAIN

These nine stunning townhome units each feature their own unique floor plan and come fully equipped with high-end finishes such as maple cabinetry, granite countertops, tiled showers, and a gas fireplace in the living room. Situated adjacent to the newly revitalized Lincoln Street area, 0.1 miles to the Downeaster with access to Portland and Boston, and just a few minutes drive to Route 101, The Townhomes on Main are in the perfect location to enjoy downtown Exeter and beyond. Prices start in the mid \$500's.


SIGNATURE
ESCROW & TITLE SERVICES, LLC

PLOT PLAN & AVAILABILITY

69 MAIN STREET | EXETER, NH

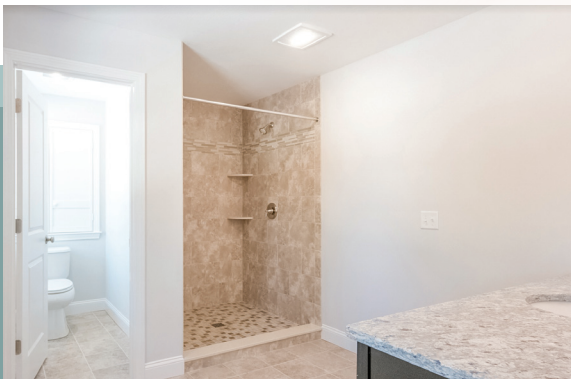


SPECIFICATIONS

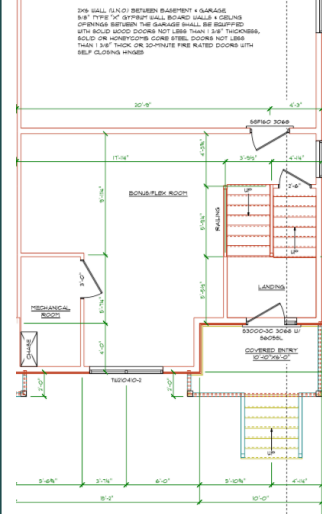
WATER:	PUBLIC
SEWAGE:	PUBLIC
HEATING:	FORCED HOT AIR
COOLING:	CENTRAL AC
FUEL:	NATURAL GAS
CONDO FEE:	\$245.37/MONTH
2019 TAX RATE:	\$23.27/PER THOUSAND

UNIT	SQFT+/-	PRICE	AVAILABILITY
A	2,374	\$599,900	AVAILABLE
B	2,278	\$589,900	AVAILABLE
C	2,374	\$614,900	AVAILABLE
D	1,910	\$519,900	AVAILABLE
E	1,910	\$499,900	AVAILABLE
F	2,175	-	SOLD
G	2,153	\$569,900	AVAILABLE
H	2,137	\$559,900	AVAILABLE
I	2,570	\$579,900	AVAILABLE

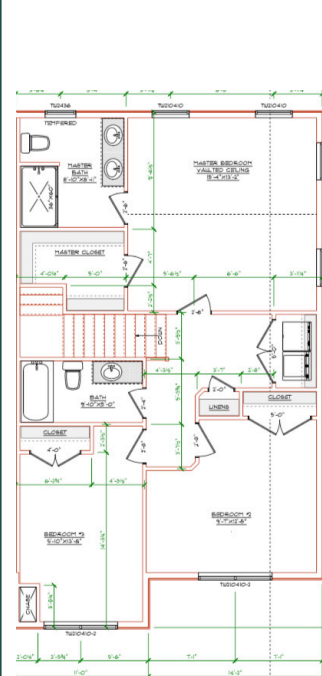
PRICING AND AVAILABILITY SUBJECT TO CHANGE WITHOUT NOTICE.
UPDATED 10.22.20



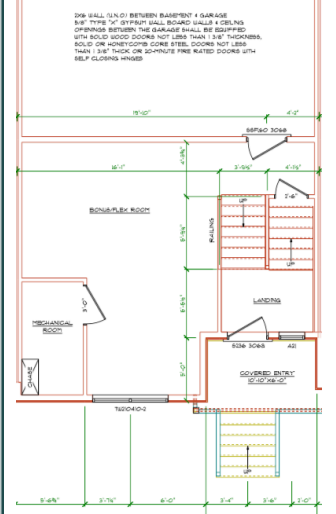
UNIT A



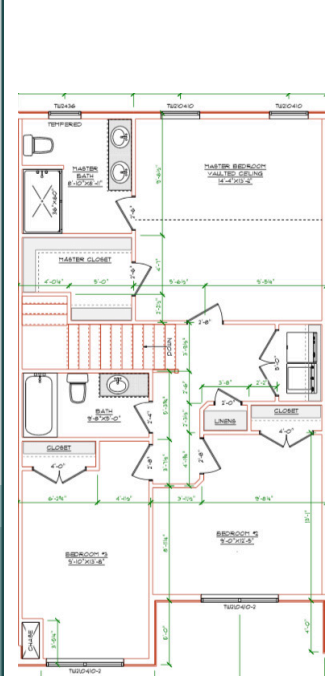
SECOND FLOOR



UNIT B



SECOND FLOOR



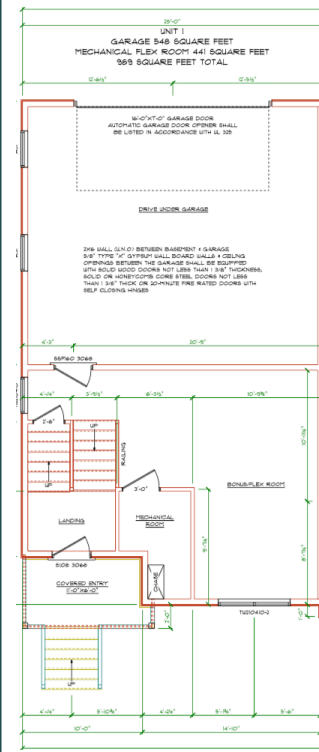
FLOOR PLANS

UNIT C

2,374^{+/-} SQFT
3 BED
2.5 BATH
\$614,900



GROUND FLOOR

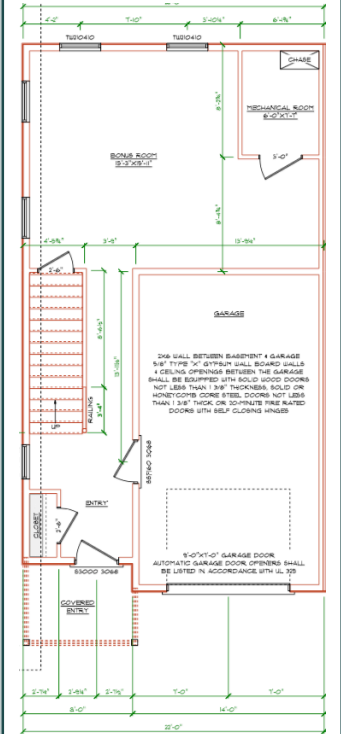


UNIT D

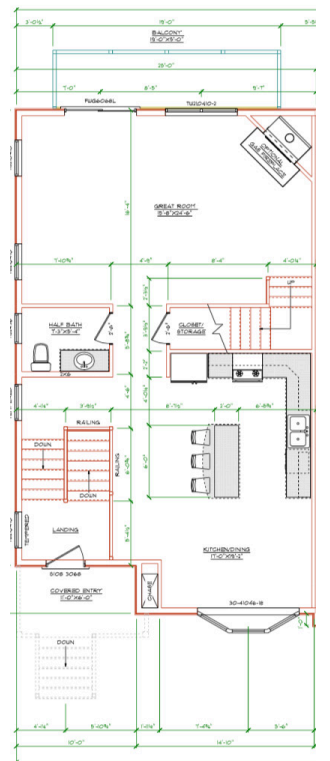
1,910^{+/-} SQFT
3 BED
2.5 BATH
\$519,900



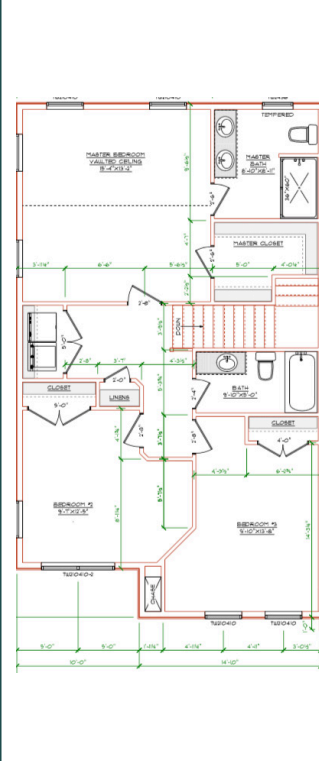
GROUND FLOOR



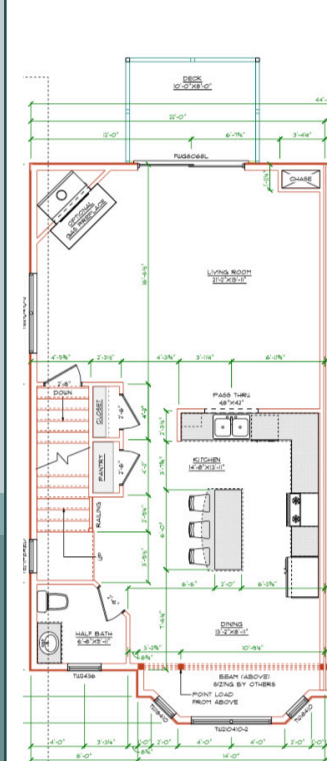
FIRST FLOOR



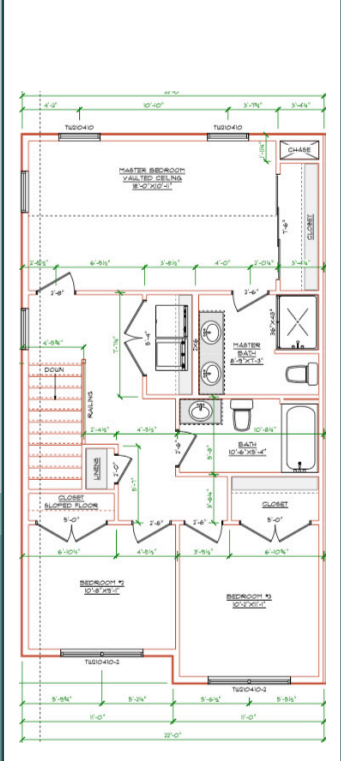
SECOND FLOOR



FIRST FLOOR



SECOND FLOOR



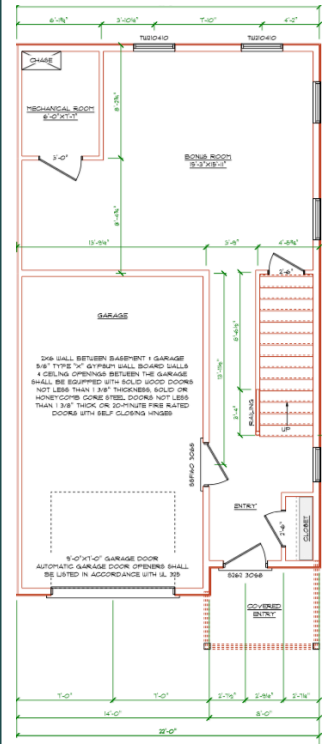
FLOOR PLANS

UNIT E

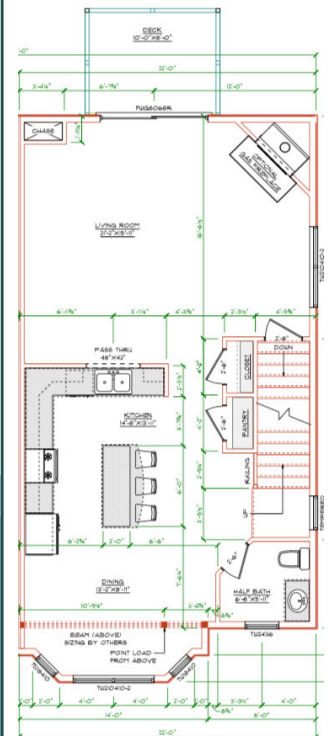
1,910+/- SQFT
3 BED
2.5 BATH
\$499,900



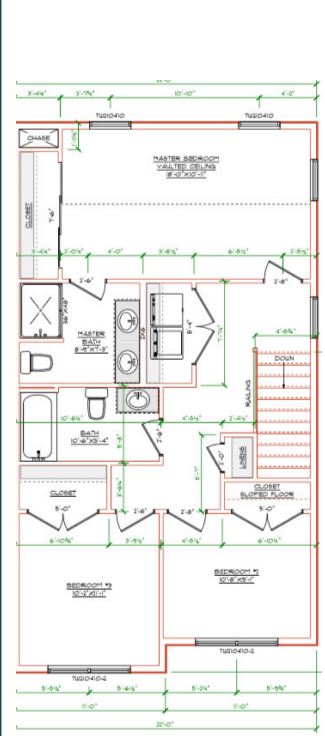
GROUND FLOOR



FIRST FLOOR



SECOND FLOOR

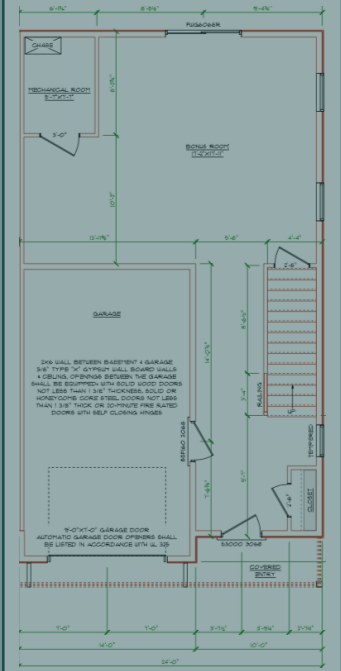


UNIT F

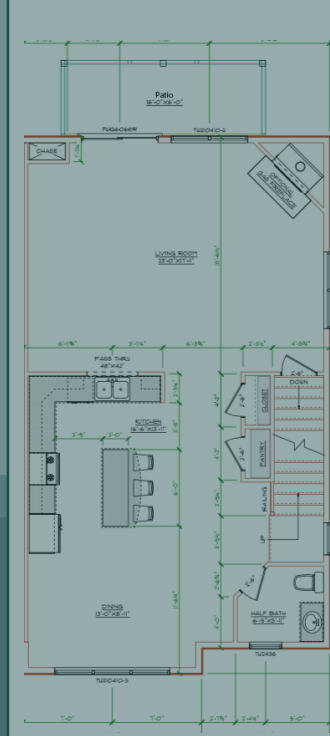
2,175+/- SQFT
3 BED
2.5 BATH
\$579,900



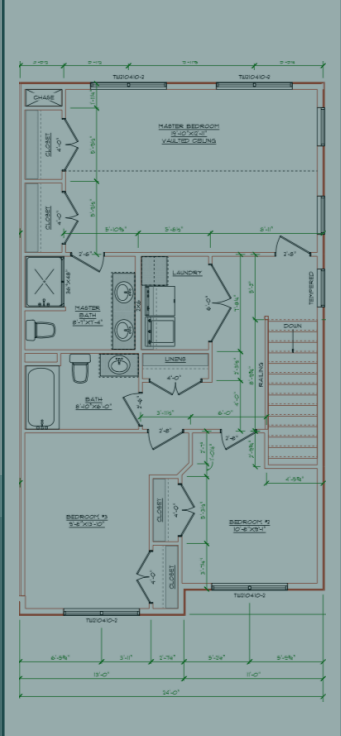
GROUND FLOOR



FIRST FLOOR



SECOND FLOOR



SOLD

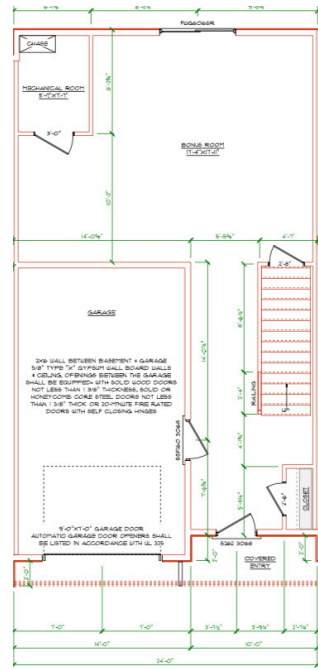
FLOOR PLANS

UNIT G

2,153^{+/-} SQFT
3 BED
2.5 BATH
\$569,900



GROUND FLOOR

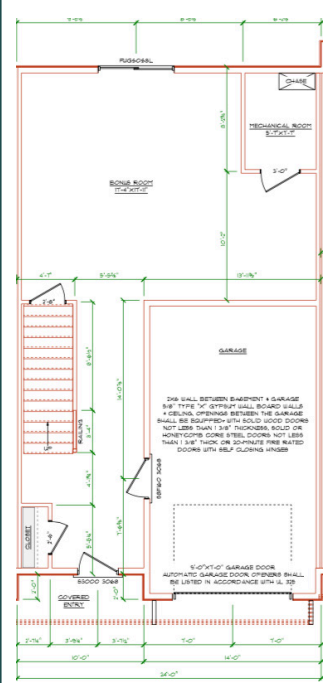


UNIT H

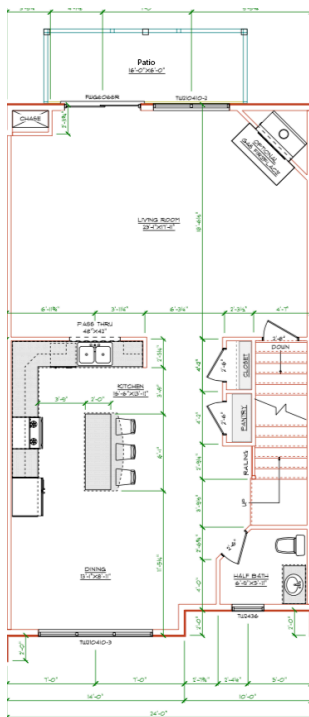
2,137^{+/-} SQFT
3 BED
2.5 BATH
\$559,900



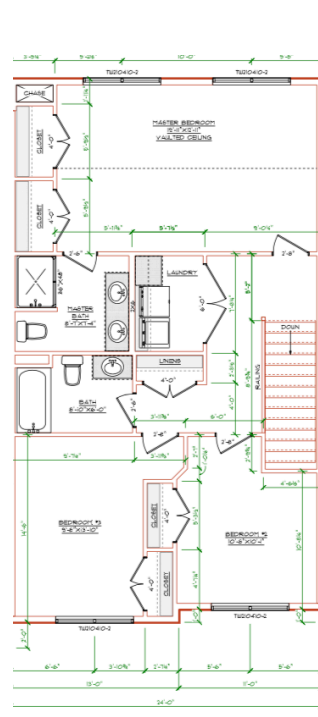
GROUND FLOOR



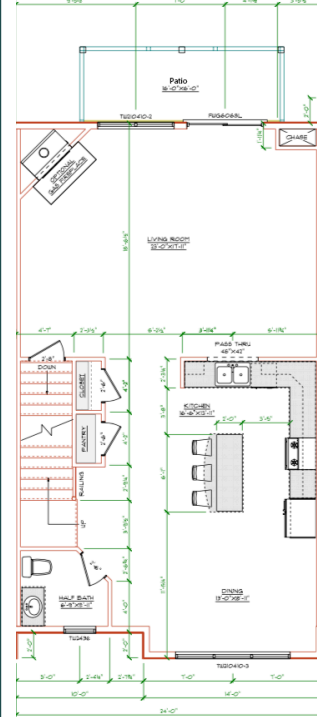
FIRST FLOOR



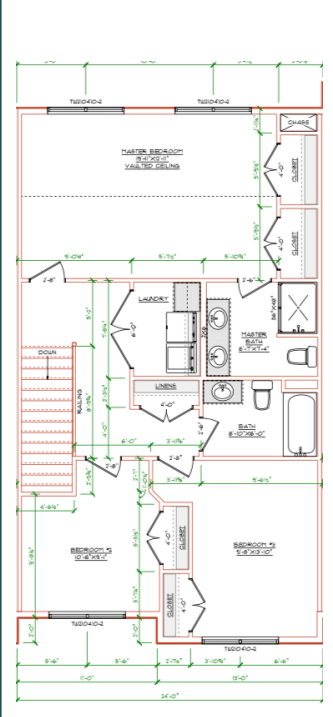
SECOND FLOOR



FIRST FLOOR



SECOND FLOOR



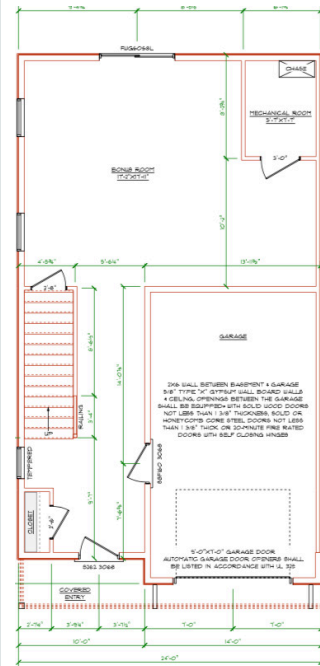
FLOOR PLANS

UNIT 1

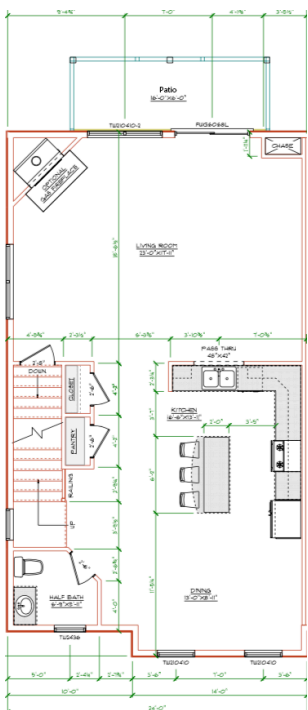
2,570^{+/-} SQFT
3 BED
2.5 BATH
\$579,900



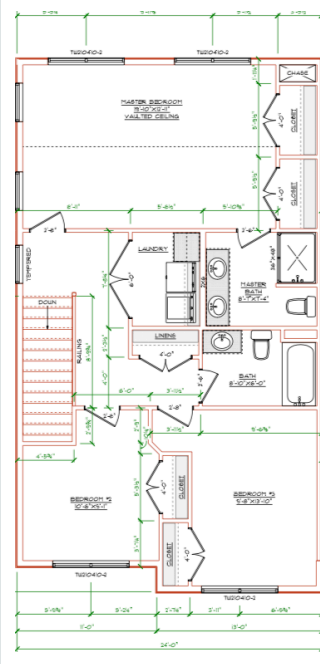
GROUND FLOOR



FIRST FLOOR



SECOND FLOOR



ABOUT EXETER, NH

Exeter is home to many beautiful natural resources, including Fort Rock Farm, the Exeter/Squamscott River, Swasey Parkway, the Oaklands and Henderson-Swasey Town Forests, Raynes Farm, the Jolly Rand Trail, and the Dolloff Conservation Easement. Exeter has a series of wonderful trails for both residents and visitors to enjoy.

Residents of Exeter also appreciate our historic downtown, our stores and restaurants, and the Downeaster, which includes a stop in Exeter and travels from Brunswick, ME to Boston, MA, every day. Drive through Exeter each day and you'll see busy streets, with people running, walking and biking -- just to get out and enjoy what we have to offer.

Exeter is ideally situated 50 miles north of Boston, MA and 50 miles south of Portland, ME along Interstate 95.

The Townhomes on Main is just 0.1 miles from Exeter Station.

69 Main Street
Very Walkable

Walk Score
76

Bike Score
58

KINBILT
Property. Properly.